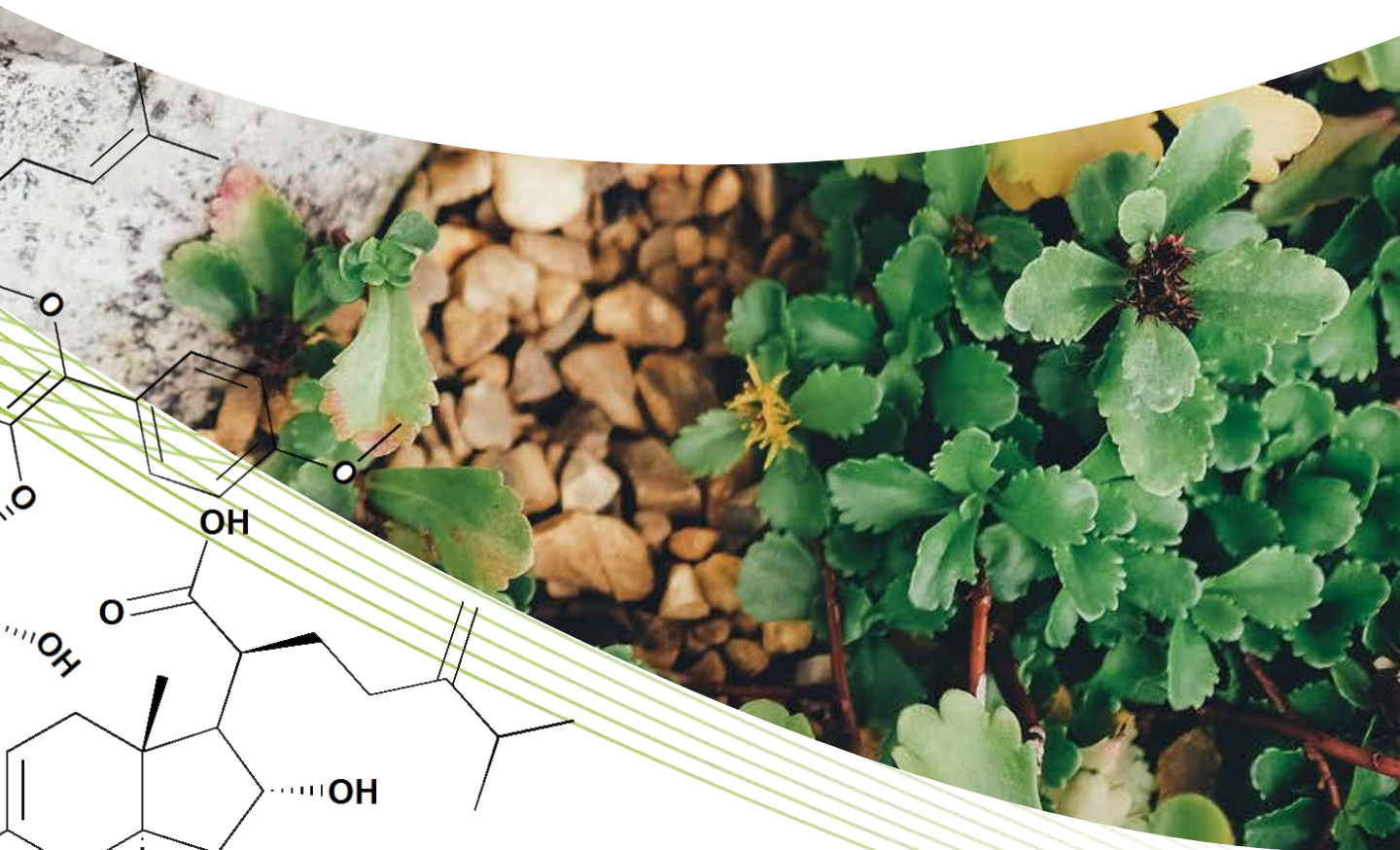


EnsolBio Phytochemicals Catalog & Services

EnsolBio Phytochemicals Mall
(<https://mall.ensolbio.com>)



**Phytochemicals for
drugs, foods and cosmetics**

EnsolBio
sciences

Table of Contents	1
About EnsolBio	2
ERPL	3
Technical Services	4
ERPL Ordering List	5
Alphabetical List of ERPLs	8

Index

Alphabet	15
Natural Source	17
Structure Family	19

Welcome to EnsolBio

Ensol Biosciences (<https://ensolbio.com>) is a leading first-in-class drug discovery company. It was founded in 2001 with a great vision to discover first-in-class drugs faster by using BT-IT convergence technology.

We have been developed BT-IT convergence technology ('bioinformatics', or 'in silico') such as genome analysis system, transcriptome analysis system, proteome analysis system and metabolome analysis system. By integrating these analysis systems into KISDD (Knowledge-based In Silico Drug Discovery) platform, Ensol Biosciences has been discovering first-in-class drug candidates.

As a new drug discovery company, Ensol Biosciences then established EnsolBio Phytochemicals Center in 2015, and has been producing valuable phytochemicals from various natural materials for drugs, foods and cosmetics. So far we enhanced the efficiency of extraction and isolation of useful phytochemicals through our proprietary **EPPA (EnsolBio Phytochemicals Purification & Analysis)** platform.

We improved the reliability and the quality of our phytochemicals using various high-tech analysis equipment and our EPPA platform, and then now provide valuable phytochemicals to the research groups in the fields of drugs, foods and cosmetics.

Now we provide not only phytochemical products(pure compounds) such as reference standards and active ingredients but also high-quality services including extraction and fractions of natural products, isolation & analysis of natural phytochemicals, and discovery of natural product based bioactive materials & new drug candidates.

Ensol Biosciences: discovering first-in-class drugs faster and providing high-quality phytochemicals



ERPL: Ensol Rare Phytochemicals Libraries

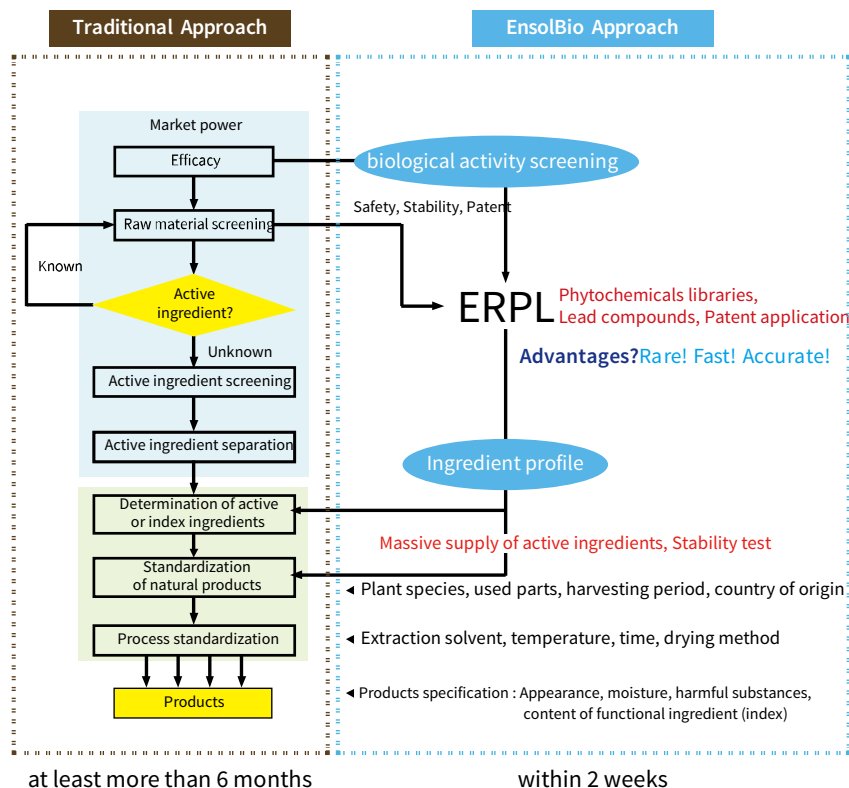
EnsolBio Phytochemicals Mall (<https://mall.ensolbio.com>) provides natural phytochemical libraries (ERPL). Our phytochemicals can be applied to various fields such as drugs, health foods, cosmetics, and agrochemicals R&D.

Currently we maintain a variety of herbal extracts and fractions from natural sources, and continually refined more than a hundred kinds of natural materials. Also, we provide phytochemical family compounds (flavonoids, alkaloids, terpenoids, lignans, etc) for biological activity screening and analysis.

The purified natural phytochemicals are available in most powder form (vial or etc.), and some materials will be provided in a liquid phase, depending on the characteristics.

We provide our phytochemicals with high-quality analysis data (HPLC, UV, MS, NMR data) for the materials.

Please feel free to contact us for more information and quotation (Tel: +82-42-939-4545, E-mail: mall@ensolbio.com).



	Active ingredient	Index ingredient
Single compound	O	O
Activity	O	O or X
Usage	Functional main ingredient	Main ingredients of standard extracts
Product	Including active ingredients above a certain level	It may not be proportionate with efficacy

Isolation & Analysis Equipment

- Ultra-sonicators
- 20 L Rotary Evaporators
- 2 L Rotary Evaporators
- Freezing Dryers
- Deep Freezers
- Gas Chromatography units
- HPLC/DAD/ELSD (High Performance Liquid Chromatography) units
- LC-MS/ESI/APCI (Mass Spectrometry)
- MPLC (Medium Pressure Liquid Chromatography)
- Preparative Liquid Chromatography units
- UV/VIS spectrometry
- pH meter
- Pure Water Manufacturing Equipment
- Fume Hood

Isolation & Analysis Services

- Fractionation of natural extracts
- Isolation & analysis of natural phytochemicals
- Optimizing method consulting
- Discovery of natural source based bioactive materials & new drug candidates
- Technical analysis report service

Cat. No.	Products	Natural Source	CAS No.	MW	Formula
ES0240701	(3R)-Tetradeca-4,6,12-trien-8,10-diyne-1,3,14-triol	Atractylodis Rhizoma Alba	879096-44-3	232.28	C ₁₄ H ₁₆ O ₃
ES0210602	2,3,5,4'-Tetrahydroxystilbene-2-O-β-D-glucoside	Polygoni Multiflori Radix	82373-94-2	406.38	C ₂₀ H ₂₂ O ₉
ES0290606	3,5,6,7,8,3',4'-Heptamethoxyflavone	Citri Unshii Pericarpium	1178-24-1	432.42	C ₂₂ H ₂₄ O ₉
ES0070604	3'-Methoxypuerarin	Puerariae Radix	117047-07-1	446.40	C ₂₂ H ₂₂ O ₁₀
ES0070609	4'-Methoxypuerarin	Puerariae Radix	92117-94-7	430.40	C ₂₂ H ₂₂ O ₉
ES0150603	5-Hydroxymethylfurfural	Rehmanniae Radix Preparata	67-47-0	126.11	C ₆ H ₆ O ₃
ES0300704	6-Hydroxy-7-methoxy-dihydrologustilide	Cnidii Rhizoma	Not available	238.28	C ₁₃ H ₁₈ O ₄
ES0050608	Adenosine	Astragali Radix	58-61-7	267.24	C ₁₀ H ₁₃ N ₅ O ₄
ES0470401	Ailanthone	Ailanthi Radicis cortex	981-15-7	376.40	C ₂₀ H ₂₄ O ₇
ES0280701	Batatasin I	Dioscoreae Rhizoma	51415-00-0	284.31	C ₁₇ H ₁₆ O ₄
ES0340606	Catechin 5-O-β-D-apiofuranoside	Ulmi Cortex	125322-89-6	422.38	C ₂₀ H ₂₂ O ₁₀
ES0090611	cis-Mulberroside A	Mori Cortex Radicis	166734-06-1	568.52	C ₂₆ H ₃₂ O ₁₄
ES0380702	Curcumenol	Curcumae Rhizoma	19431-84-6	234.33	C ₁₅ H ₂₂ O ₂
ES0380701	Curcumenone	Curcumae Rhizoma	100347-96-4	234.33	C ₁₅ H ₂₂ O ₂
ES0070607	Daidzein 8-C-apiosyl(1*6) glucoside	Puerariae Radix	Not available	548.49	C ₂₆ H ₂₈ O ₁₃
ES0070608	Daidzin	Puerariae Radix	552-66-9	416.38	C ₂₁ H ₂₀ O ₉
ES0230703	Dehydrofalcariindiol	Araliae Continentalis Radix	Not available	258.36	C ₁₇ H ₂₂ O ₂
ES0430701	Dehydrotumulosic acid	Poria Sclerotium	6754-16-1	484.71	C ₃₁ H ₄₈ O ₄
ES0360602	Ecdysterone	Achyranthis Radix	5289-74-7	480.63	C ₂₇ H ₄₄ O ₇
ES0230702	Falcariindiol	Araliae Continentalis Radix	55297-87-5	260.37	C ₁₇ H ₂₄ O ₂
ES0230704	Falcariindiol-8-acetate	Araliae Continentalis Radix	Not available	302.41	C ₁₉ H ₂₆ O ₃
ES0380703	Furanodienone	Curcumae Rhizoma	24268-41-5	230.30	C ₁₅ H ₁₈ O ₂
ES0370505	Gardenoside	Gardeniae Fructus	24512-62-7	404.37	C ₁₇ H ₂₄ O ₁₁
ES0040704	Gastrodigenin	Gastrodiae Rhizoma	623-05-2	124.14	C ₇ H ₈ O ₂
ES0040701	Gastrodin	Gastrodiae Rhizoma	62499-27-8	286.28	C ₁₃ H ₁₈ O ₇
ES0370305	Geniposide	Gardeniae Fructus	24512-63-8	388.37	C ₁₇ H ₂₄ O ₁₀
ES0380704	Germacrone	Curcumae Rhizoma	6902-91-6	218.33	C ₁₅ H ₂₂ O
ES0080709	Glycyrrin	Glycyrrhizae Radix et Rhizoma	66056-18-6	382.41	C ₂₂ H ₂₂ O ₆
ES0080711	Glyasperin D	Glycyrrhizae Radix et Rhizoma	142561-10-2	370.45	C ₂₂ H ₂₆ O ₅
ES0200601	Guaiacylglycerol	Eucommiae Cortex	1208-42-0	214.22	C ₁₀ H ₁₄ O ₅

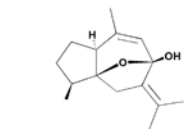
Cat. No.	Products	Natural Source	CAS No.	MW	Formula
ES0050606	Guanosine	Astragali Radix	118-00-3	283.24	C ₁₀ H ₁₃ N ₅ O ₅
ES0010101	Honokiol	Magnoliae Cortex	35354-74-6	266.33	C ₁₈ H ₁₈ O ₂
ES0540404	Icariside II	Epimedii Herba	113558-15-9	514.52	C ₂₇ H ₃₀ O ₁₀
ES0080604	Isoliquiritigenin-4'-O-apioglucoside	Glycyrrhizae Radix et Rhizoma	Not available	550.51	C ₂₆ H ₃₀ O ₁₃
ES0050705	Isomucronulatol	Astragali Radix	52250-35-8	302.32	C ₁₇ H ₁₈ O ₅
ES0050702	Isomucronulatol 7-O-glucoside	Astragali Radix	94367-43-8	464.46	C ₂₃ H ₂₈ O ₁₀
ES0310501	Isovitexin	Crataegi fructus	38953-85-4	432.39	C ₂₁ H ₂₀ O ₁₀
ES0370506	Ixoroside	Gardeniae Fructus	58514-30-0	360.36	C ₁₆ H ₂₄ O ₉
ES0180704	Kurarinone	Sophorae Radix	34981-26-5	438.53	C ₂₆ H ₃₀ O ₆
ES0180606	Kushenol O	Sophorae Radix	102390-91-0	562.52	C ₂₇ H ₃₀ O ₁₃
ES0490104	Kuwanon B	Mori Ramulus	62949-78-4	420.45	C ₂₅ H ₂₄ O ₆
ES0490103	Kuwanon C	Mori Ramulus	62949-79-5	422.47	C ₂₅ H ₂₆ O ₆
ES0090711	Kuwanon E	Mori Cortex Radicis	68401-05-8	424.49	C ₂₅ H ₂₈ O ₆
ES0090717	Kuwanon U	Mori Cortex Radicis	123702-95-4	438.51	C ₂₆ H ₃₀ O ₆
ES0080707	Licoricidin	Glycyrrhizae Radix et Rhizoma	30508-27-1	424.53	C ₂₆ H ₃₂ O ₅
ES0080713	Licorisoflavan A	Glycyrrhizae Radix et Rhizoma	129314-37-0	438.56	C ₂₇ H ₃₄ O ₅
ES0370303	Linoelaidic acid	Gardeniae Fructus	506-21-8	280.45	C ₁₈ H ₃₂ O ₂
ES0080603	Liquiritigenin	Glycyrrhizae Radix et Rhizoma	578-86-9	256.25	C ₁₅ H ₁₂ O ₄
ES0280601	L-Phenylalanine	Dioscoreae Rhizoma	63-91-2	165.19	C ₉ H ₁₁ NO ₂
ES0010405	Magnatriol B	Magnoliae Cortex	Not available	242.27	C ₁₅ H ₁₄ O ₃
ES0010102	Magnolol	Magnoliae Cortex	528-43-8	266.33	C ₁₈ H ₁₈ O ₂
ES0010602	Magnoloside A	Magnoliae Cortex	113557-95-2	624.59	C ₂₉ H ₃₆ O ₁₅
ES0010601	Magnoloside B	Magnoliae Cortex	113557-95-2	786.73	C ₃₅ H ₄₆ O ₂₀
ES0010402	Magnoloside F	Magnoliae Cortex	1418309-03-1	624.59	C ₂₉ H ₃₆ O ₁₅
ES0520501	Maltol glucoside	Dianthi Herba	20847-13-6	288.25	C ₁₂ H ₁₆ O ₈
ES0050704	Methylnissolin	Astragali Radix	73340-41-7	300.31	C ₁₇ H ₁₆ O ₅
ES0090714	Morusin	Mori Cortex Radicis	62596-29-6	420.45	C ₂₅ H ₂₄ O ₆
ES0090701	Mulberrofuran G	Mori Cortex Radicis	87085-00-5	562.57	C ₃₄ H ₂₆ O ₈
ES0090608	Mulberroside A	Mori Cortex Radicis	102841-42-9	568.52	C ₂₆ H ₃₂ O ₁₄
ES0290605	Nobiletin	Citri Unshii Pericarpium	478-01-3	402.39	C ₂₁ H ₂₂ O ₈

Cat. No.	Products	Natural Source	CAS No.	MW	Formula
ES0480402	N-trans-Feruloyltyramine	Chelidonii Herba	66648-43-9	313.35	C ₁₈ H ₁₉ NO ₄
ES0480401	N-trans-p-Coumaroyltyramine	Chelidonii Herba	36417-86-4	283.32	C ₁₇ H ₁₇ NO ₃
ES0070614	Ononin	Puerariae Radix	486-62-4	430.40	C ₂₂ H ₂₂ O ₉
ES0190604	Oxypaeoniflorin	Paeoniae Radix	39011-91-1	496.46	C ₂₃ H ₂₈ O ₁₂
ES0490101	Oxyresveratrol	Mori Ramulus	29700-22-9	244.24	C ₁₄ H ₁₂ O ₄
ES0040706	Parishin	Gastrodiae Rhizoma	62499-28-9	966.89	C ₄₄ H ₅₄ O ₂₄
ES0040705	Parishin C	Gastrodiae Rhizoma	174972-80-6	728.65	C ₃₂ H ₄₀ O ₁₉
ES0200603	Pinoresinol-di-O-β-D-glucoside	Eucommiae Cortex	60485-34-9	682.67	C ₃₂ H ₄₂ O ₁₆
ES0390701	Piperine	Piperis Nigri Fructus	94-62-2	285.34	C ₁₇ H ₁₉ NO ₃
ES0390704	Piperolein B	Piperis Nigri Fructus	30505-89-6	343.46	C ₂₁ H ₂₉ NO ₃
ES0070603	Puerarin	Puerariae Radix	3681-99-0	416.38	C ₂₁ H ₂₀ O ₉
ES0070601	Puerarin 4'-O-glucoside	Puerariae Radix	117047-08-2	578.52	C ₂₇ H ₃₀ O ₁₄
ES0090719	Sanggenofuran A	Mori Cortex Radicis	426211-25-8	460.60	C ₃₀ H ₃₆ O ₄
ES0300701	Senkyunolide I	Cnidii Rhizoma	94596-28-8	224.25	C ₁₂ H ₁₆ O ₄
ES0120609	Sesamin	Acanthopanax Root Bark	607-80-7	354.35	C ₂₀ H ₁₈ O ₆
ES0260604	Syringin	Kalopanax Cortex	118-34-3	372.37	C ₁₇ H ₂₄ O ₉
ES0290607	Tangeretin	Citri Unshii Pericarpium	481-53-8	372.37	C ₂₀ H ₂₀ O ₇
ES0120705	trans-Farnesol	Acanthopanax Root Bark	106-28-5	222.37	C ₁₅ H ₂₆ O
ES0480502	Typhaneoside	Chelidonii Herba	104472-68-6	770.69	C ₃₄ H ₄₂ O ₂₀
ES0050603	Uridine	Astragali Radix	58-96-8	244.20	C ₉ H ₁₂ N ₂ O ₆
ES0410602	Verbascoside	Plantaginis Semen	61276-17-3	624.59	C ₂₉ H ₃₆ O ₁₅
ES0450602	Viscumneoside III	Visci Herba	118985-27-6	596.53	C ₂₇ H ₃₂ O ₁₅
ES0380602	Zedoarondiol	Curcumae Rhizoma	98644-24-7	252.35	C ₁₅ H ₂₄ O ₃

Description	Structure
(3R)-Tetradeca-4,6,12-trien-8,10-diyne-1,3,14-triol	(3R)-Tetradeca-4,6,12-trien-8,10-diyne-1,3,14-triol
Cat# ES0240701	
Chemical Formula $C_{14}H_{16}O_3$	
MW 232.28	
CAS# 879096-44-3	
Natural Source Atractylodis Rhizoma Alba	
Chemical Family Polyacetylene	
2,3,5,4'-Tetrahydroxystilbene-2-O-β-D-glucoside	2,3,5,4'-Tetrahydroxystilbene-2-O-β-D-glucoside
Cat# ES0210602	
Chemical Formula $C_{20}H_{22}O_9$	
MW 406.38	
CAS# 82373-94-2	
Natural Source Polygoni Multiflori Radix	
Chemical Family Stilbenoid	
3,5,6,7,8,3',4'-Heptamethoxyflavone	3,5,6,7,8,3',4'-Heptamethoxyflavone
Cat# ES0290606	
Chemical Formula $C_{22}H_{24}O_9$	
MW 432.42	
CAS# 1178-24-1	
Natural Source Citri Unshii Pericarpium	
Chemical Family Flavonoid	
3'-Methoxypuerarin	3'-Methoxypuerarin
Cat# ES0070604	
Chemical Formula $C_{22}H_{22}O_{10}$	
MW 446.4	
CAS# 117047-07-1	
Natural Source Puerariae Radix	
Chemical Family Flavonoid	
4'-Methoxypuerarin	4'-Methoxypuerarin
Cat# ES0070609	
Chemical Formula $C_{22}H_{22}O_9$	
MW 430.4	
CAS# 92117-94-7	
Natural Source Puerariae Radix	
Chemical Family Flavonoid	
5-Hydroxymethylfurfural	5-Hydroxymethylfurfural
Cat# ES0150603	
Chemical Formula $C_6H_6O_3$	
MW 126.11	
CAS# 67-47-0	
Natural Source Rehmanniae Radix Preparata	
Chemical Family Furfural	

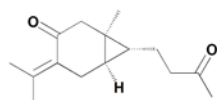
Description	Structure
6-Hydroxy-7-methoxy-dihydrologustilide	6-Hydroxy-7-methoxy-dihydrologustilide
Cat# ES0300704	
Chemical Formula $C_{13}H_{18}O_4$	
MW 238.28	
CAS# Not available	
Natural Source Cnidii Rhizoma	
Chemical Family Phthalide	
Adenosine	Adenosine
Cat# ES0050608	
Chemical Formula $C_{10}H_{13}N_5O_4$	
MW 267.24	
CAS# 58-61-7	
Natural Source Astragali Radix	
Chemical Family Nucleoside	
Ailanthone	Ailanthone
Cat# ES0470401	
Chemical Formula $C_{20}H_{24}O_7$	
MW 376.4	
CAS# 981-15-7	
Natural Source Ailanthi Radicis Cortex	
Chemical Family Terpenoid	
Batatasin I	Batatasin I
Cat# ES0280701	
Chemical Formula $C_{17}H_{16}O_4$	
MW 284.31	
CAS# 51415-00-0	
Natural Source Dioscoreae Rhizoma	
Chemical Family Phenolic	
Catechin 7-O-β-D-apiofuranoside	Catechin 7-O-β-D-apiofuranoside
Cat# ES0340606	
Chemical Formula $C_{20}H_{22}O_{10}$	
MW 422.38	
CAS# 125322-89-6	
Natural Source Ulmi Cortex	
Chemical Family Flavonoid	
cis-Mulberroside A	cis-Mulberroside A
Cat# ES0090611	
Chemical Formula $C_{26}H_{32}O_{14}$	
MW 568.52	
CAS# 166734-06-1	
Natural Source Mori Cortex Radicis	
Chemical Family Stilbenoid	

Description	Structure
Curcumenol	Curcumenol
Cat#	ES0380702
Chemical Formula	C ₁₅ H ₂₂ O ₂
MW	234.33
CAS#	19431-84-6
Natural Source	Curcumae Rhizoma
Chemical Family	Terpenoid



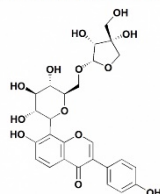
C₁₅H₂₂O₂
Mol. Wt.: 234.33

Curcumenone	Curcumenone
Cat#	ES0380701
Chemical Formula	C ₁₅ H ₂₂ O ₂
MW	234.33
CAS#	100347-96-4
Natural Source	Curcumae Rhizoma
Chemical Family	Terpenoid



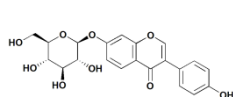
C₁₅H₂₂O₂
Mol. Wt.: 234.33

Daidzein 8-C-aposyl(1→6) glucoside	Daidzein 8-C-aposyl(1→6) glucoside
Cat#	ES0070607
Chemical Formula	C ₂₆ H ₂₈ O ₁₃
MW	548.49
CAS#	Not available
Natural Source	Puerariae Radix
Chemical Family	Flavonoid



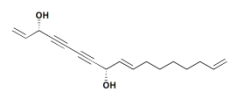
C₂₆H₂₈O₁₃
Mol. Wt.: 548.49

Daidzin	Daidzin
Cat#	ES0070608
Chemical Formula	C ₂₁ H ₂₀ O ₉
MW	416.38
CAS#	552-66-9
Natural Source	Puerariae Radix
Chemical Family	Flavonoid



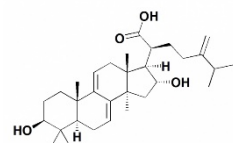
C₂₁H₂₀O₉
Mol. Wt.: 416.38

Dehydrofalcariindiol	Dehydrofalcariindiol
Cat#	ES0230703
Chemical Formula	C ₁₇ H ₂₂ O ₂
MW	258.36
CAS#	Not available
Natural Source	Araliae Continentalis Radix
Chemical Family	Polyacetylene



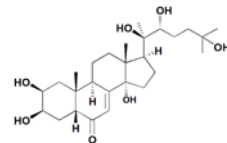
C₁₇H₂₂O₂
Mol. Wt.: 258.36

Dehydrotumulosic acid	Dehydrotumulosic acid
Cat#	ES0430701
Chemical Formula	C ₃₁ H ₄₈ O ₄
MW	484.71
CAS#	6754-16-1
Natural Source	Poria Sclerotium
Chemical Family	Triterpenoid



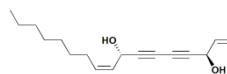
C₃₁H₄₈O₄
Mol. Wt.: 484.71

Description	Structure
Ecdysterone	Ecdysterone
Cat#	ES0360602
Chemical Formula	C ₂₇ H ₄₄ O ₇
MW	480.63
CAS#	5289-74-7
Natural Source	Achyranthis Radix
Chemical Family	Steroid



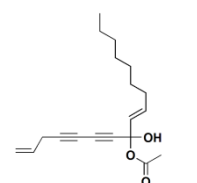
C₂₇H₄₄O₇
Mol. Wt.: 480.63

Falcariindiol	Falcariindiol
Cat#	ES0230702
Chemical Formula	C ₁₇ H ₂₄ O ₂
MW	260.37
CAS#	55297-87-5
Natural Source	Araliae Continentalis Radix
Chemical Family	Polyacetylene



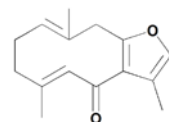
C₁₇H₂₄O₂
Mol. Wt.: 260.37

Falcariindiol-8-acetate	Falcariindiol-8-acetate
Cat#	ES0230704
Chemical Formula	C ₁₉ H ₂₆ O ₃
MW	302.41
CAS#	Not available
Natural Source	Araliae Continentalis Radix
Chemical Family	Polyacetylene



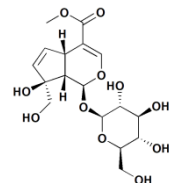
C₁₉H₂₆O₃
Mol. Wt.: 302.41

Furanodienone	Furanodienone
Cat#	ES0380703
Chemical Formula	C ₁₅ H ₁₈ O ₂
MW	230.3
CAS#	24268-41-5
Natural Source	Curcumae Rhizoma
Chemical Family	Terpenoid



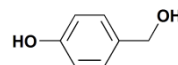
C₁₅H₁₈O₂
Mol. Wt.: 230.30

Gardenoside	Gardenoside
Cat#	ES0370505
Chemical Formula	C ₁₇ H ₂₄ O ₁₁
MW	404.37
CAS#	24512-62-7
Natural Source	Gardeniae Fructus
Chemical Family	Terpenoid

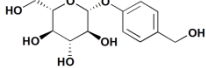
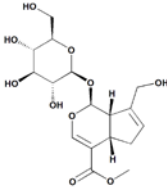
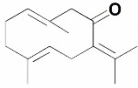
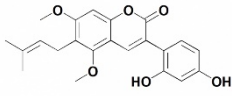
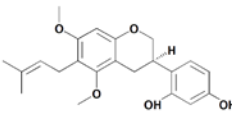
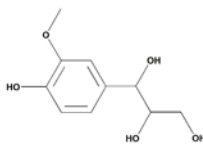


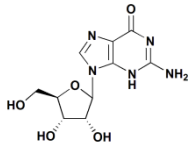
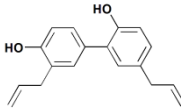
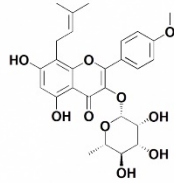
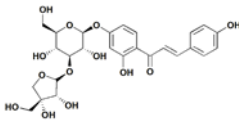
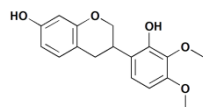
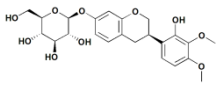
C₁₇H₂₄O₁₁
Mol. Wt.: 404.37

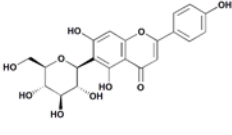
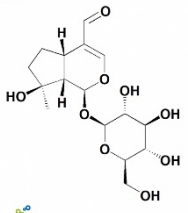
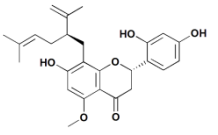
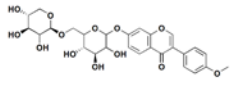
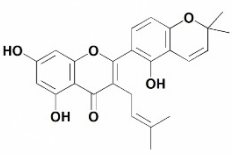
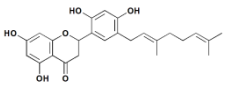
Gastrodigenin	Gastrodigenin
Cat#	ES0040704
Chemical Formula	C ₇ H ₈ O ₂
MW	124.14
CAS#	623-05-2
Natural Source	Gastrodiae Rhizoma
Chemical Family	Phenolic

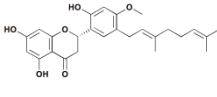
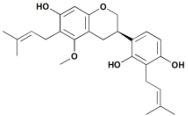
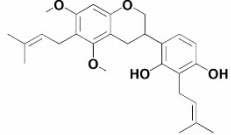
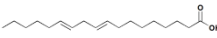
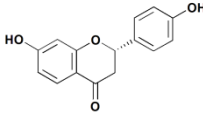
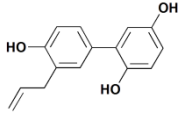


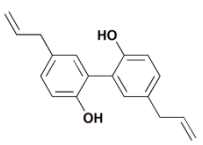
C₇H₈O₂
Mol. Wt.: 124.14

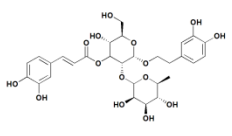
Description		Structure
Gastrodin		Gastrodin
Cat#	ES0040701	 <chem>C10H18O7</chem> 286.28 62499-27-8 Gastrodiae Rhizoma Phenolic <small>EnsolBio sciences</small> <chem>C10H18O7</chem> Mol. Wt.: 286.28
Chemical Formula		
MW		
CAS#		
Natural Source		
Chemical Family		
Geniposide		Geniposide
Cat#	ES0370305	 <chem>C17H24O10</chem> 388.37 24512-63-8 Gardeniae Fructus Iridoid <small>EnsolBio sciences</small> <chem>C17H24O10</chem> Mol. Wt.: 388.37
Chemical Formula		
MW		
CAS#		
Natural Source		
Chemical Family		
Germacrone		Germacrone
Cat#	ES0380704	 <chem>C15H22O</chem> 218.33 6902-91-6 Curcumae Rhizoma Terpenoid <small>EnsolBio sciences</small> <chem>C15H22O</chem> Mol. Wt.: 218.33
Chemical Formula		
MW		
CAS#		
Natural Source		
Chemical Family		
Glycyrrin		Glycyrrin
Cat#	ES0080709	 <chem>C22H22O6</chem> 382.41 66056-18-6 Glycyrrhizae Radix et Rhizoma Flavonoid <small>EnsolBio sciences</small> <chem>C22H22O6</chem> Mol. Wt.: 382.41
Chemical Formula		
MW		
CAS#		
Natural Source		
Chemical Family		
Glyasperin D		Glyasperin D
Cat#	ES0080711	 <chem>C22H26O5</chem> 370.44 142561-10-2 Glycyrrhizae Radix et Rhizoma Flavonoid <small>EnsolBio sciences</small> <chem>C22H26O5</chem> Mol. Wt.: 370.44
Chemical Formula		
MW		
CAS#		
Natural Source		
Chemical Family		
Guaiacylglycerol		Guaiacylglycerol
Cat#	ES0200601	 <chem>C10H14O5</chem> 214.22 1208-42-0 Eucommiae Cortex Phenolic <small>EnsolBio sciences</small> <chem>C10H14O5</chem> Mol. Wt.: 214.22
Chemical Formula		
MW		
CAS#		
Natural Source		
Chemical Family		

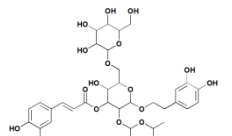
Description		Structure
Guanosine		Guanosine
Cat#	ES0050606	 <chem>C10H13N5O5</chem> 283.24 118-00-3 Astragali Radix Nucleoside <small>EnsolBio sciences</small> <chem>C10H13N5O5</chem> Mol. Wt.: 283.24
Chemical Formula		
MW		
CAS#		
Natural Source		
Chemical Family		
Honokiol		Honokiol
Cat#	ES0010101	 <chem>C18H18O2</chem> 266.33 35354-74-6 Magnoliae Cortex Lignan <small>EnsolBio sciences</small> <chem>C18H18O2</chem> Mol. Wt.: 266.33
Chemical Formula		
MW		
CAS#		
Natural Source		
Chemical Family		
Icariside II		Icariside II
Cat#	ES0540404	 <chem>C27H30O10</chem> 514.52 113558-15-9 Epimedii Herba Flavonoid <small>EnsolBio sciences</small> <chem>C27H30O10</chem> Mol. Wt.: 514.52
Chemical Formula		
MW		
CAS#		
Natural Source		
Chemical Family		
Isoliquiritigenin-4'-O-apioglucoside		Isoliquiritigenin-4'-O-apioglucoside
Cat#	ES0080604	 <chem>C26H30O13</chem> 550.51 Not available Glycyrrhizae Radix et Rhizoma Phenolic <small>EnsolBio sciences</small> <chem>C26H30O13</chem> Mol. Wt.: 550.51
Chemical Formula		
MW		
CAS#		
Natural Source		
Chemical Family		
Isomucronulatol		Isomucronulatol
Cat#	ES0050705	 <chem>C17H18O5</chem> 302.32 52250-35-8 Astragali Radix Flavonoid <small>EnsolBio sciences</small> <chem>C17H18O5</chem> Mol. Wt.: 302.32
Chemical Formula		
MW		
CAS#		
Natural Source		
Chemical Family		
Isomucronulatol 7-O-glucoside		Isomucronulatol 7-O-glucoside
Cat#	ES0050702	 <chem>C23H28O10</chem> 464.46 94367-43-8 Astragali Radix Flavonoid <small>EnsolBio sciences</small> <chem>C23H28O10</chem> Mol. Wt.: 464.46
Chemical Formula		
MW		
CAS#		
Natural Source		
Chemical Family		

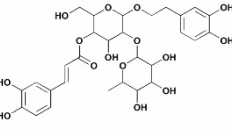
Description		Structure
Isovitexin		Isovitexin
Cat#	ES0310501	 <chem>C₂₁H₂₀O₁₀</chem> 432.38 38953-85-4 Crataegi fructus Flavonoid EnsolBio Sciences <chem>C₂₁H₂₀O₁₀</chem> Mol. Wt.: 432.38
Chemical Formula	<chem>C₂₁H₂₀O₁₀</chem>	
MW	432.38	
CAS#	38953-85-4	
Natural Source	Crataegi fructus	
Chemical Family	Flavonoid	
Ixoroside		Ixoroside
Cat#	ES0370506	 <chem>C₁₆H₂₄O₉</chem> 360.36 58514-30-0 Gardeniae Fructus Iridoid EnsolBio Sciences <chem>C₁₆H₂₄O₉</chem> Mol. Wt.: 360.36
Chemical Formula	<chem>C₁₆H₂₄O₉</chem>	
MW	360.36	
CAS#	58514-30-0	
Natural Source	Gardeniae Fructus	
Chemical Family	Iridoid	
Kurarinone		Kurarinone
Cat#	ES0180704	 <chem>C₂₆H₃₀O₆</chem> 438.51 34981-26-5 Sophorae Radix Flavonoid EnsolBio Sciences <chem>C₂₆H₃₀O₆</chem> Mol. Wt.: 438.51
Chemical Formula	<chem>C₂₆H₃₀O₆</chem>	
MW	438.51	
CAS#	34981-26-5	
Natural Source	Sophorae Radix	
Chemical Family	Flavonoid	
Kushenol O		Kushenol O
Cat#	ES0180606	 <chem>C₂₇H₃₀O₁₃</chem> 562.5193 102390-91-0 Sophorae Radix Flavonoid EnsolBio Sciences <chem>C₂₇H₃₀O₁₃</chem> Mol. Wt.: 562.52
Chemical Formula	<chem>C₂₇H₃₀O₁₃</chem>	
MW	562.5193	
CAS#	102390-91-0	
Natural Source	Sophorae Radix	
Chemical Family	Flavonoid	
Kuwanon B		Kuwanon B
Cat#	ES0490104	 <chem>C₂₅H₂₄O₆</chem> 420.45 62949-78-4 Mori Ramulus Flavonoid EnsolBio Sciences <chem>C₂₅H₂₄O₆</chem> Mol. Wt.: 420.45
Chemical Formula	<chem>C₂₅H₂₄O₆</chem>	
MW	420.45	
CAS#	62949-78-4	
Natural Source	Mori Ramulus	
Chemical Family	Flavonoid	
Kuwanon E		Kuwanon E
Cat#	ES0090711	 <chem>C₂₅H₂₈O₆</chem> 424.49 68401-05-8 Mori Cortex Radicis Flavonoid EnsolBio Sciences <chem>C₂₅H₂₈O₆</chem> Mol. Wt.: 424.49
Chemical Formula	<chem>C₂₅H₂₈O₆</chem>	
MW	424.49	
CAS#	68401-05-8	
Natural Source	Mori Cortex Radicis	
Chemical Family	Flavonoid	

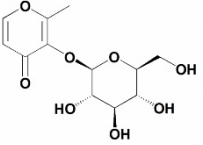
Description		Structure
Kuwanon U		Kuwanon U
Cat#	ES0090717	 <chem>C₂₆H₃₀O₆</chem> 438.51 123702-95-4 Mori Cortex Radicis Flavonoid EnsolBio Sciences <chem>C₂₆H₃₀O₆</chem> Mol. Wt.: 438.51
Chemical Formula	<chem>C₂₆H₃₀O₆</chem>	
MW	438.51	
CAS#	123702-95-4	
Natural Source	Mori Cortex Radicis	
Chemical Family	Flavonoid	
Licoricidin		Licoricidin
Cat#	ES0080707	 <chem>C₂₆H₃₂O₅</chem> 424.53 30508-27-1 Glycyrrhizae Radix et Rhizoma Flavonoid EnsolBio Sciences <chem>C₂₆H₃₂O₅</chem> Mol. Wt.: 424.53
Chemical Formula	<chem>C₂₆H₃₂O₅</chem>	
MW	424.53	
CAS#	30508-27-1	
Natural Source	Glycyrrhizae Radix et Rhizoma	
Chemical Family	Flavonoid	
Licorisoflavan A		Licorisoflavan A
Cat#	ES0080713	 <chem>C₂₇H₃₄O₅</chem> 438.56 129314-37-0 Glycyrrhizae Radix et Rhizoma Flavonoid EnsolBio Sciences <chem>C₂₇H₃₄O₅</chem> Mol. Wt.: 438.56
Chemical Formula	<chem>C₂₇H₃₄O₅</chem>	
MW	438.56	
CAS#	129314-37-0	
Natural Source	Glycyrrhizae Radix et Rhizoma	
Chemical Family	Flavonoid	
Linoelaidic acid		Linoelaidic acid
Cat#	ES0370303	 <chem>C₁₈H₃₂O₂</chem> 280.45 506-21-8 Gardeniae Fructus Fatty acid EnsolBio Sciences <chem>C₁₈H₃₂O₂</chem> Mol. Wt.: 280.45
Chemical Formula	<chem>C₁₈H₃₂O₂</chem>	
MW	280.45	
CAS#	506-21-8	
Natural Source	Gardeniae Fructus	
Chemical Family	Fatty acid	
Liquiritigenin		Liquiritigenin
Cat#	ES0080603	 <chem>C₁₅H₁₂O₄</chem> 256.25 578-86-9 Glycyrrhizae Radix et Rhizoma Flavonoid EnsolBio Sciences <chem>C₁₅H₁₂O₄</chem> Mol. Wt.: 256.25
Chemical Formula	<chem>C₁₅H₁₂O₄</chem>	
MW	256.25	
CAS#	578-86-9	
Natural Source	Glycyrrhizae Radix et Rhizoma	
Chemical Family	Flavonoid	
Magnatriol B		Magnatriol B
Cat#	ES0010405	 <chem>C₁₅H₁₄O₃</chem> 242.27 Not available Magnoliae Cortex Lignan EnsolBio Sciences <chem>C₁₅H₁₄O₃</chem> Mol. Wt.: 242.27
Chemical Formula	<chem>C₁₅H₁₄O₃</chem>	
MW	242.27	
CAS#	Not available	
Natural Source	Magnoliae Cortex	
Chemical Family	Lignan	

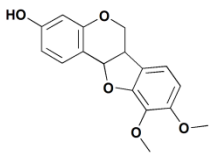
Description	Structure
Magnolol	Magnolol
Cat# ES0010102	
Chemical Formula $C_{18}H_{18}O_2$	
MW 266.33	
CAS# 528-43-8	
Natural Source Magnoliae Cortex	
Chemical Family Lignan	EnsolBio sciences $C_{18}H_{18}O_2$ Mol. Wt.: 266.33

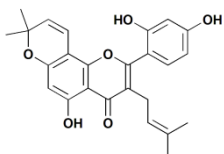
Magnoloside A	Magnoloside A
Cat# ES0010602	
Chemical Formula $C_{29}H_{36}O_{15}$	
MW 624.59	
CAS# 113557-95-2	
Natural Source Magnoliae Cortex	
Chemical Family Phenylpropanoid	EnsolBio sciences $C_{29}H_{36}O_{15}$ Mol. Wt.: 624.59

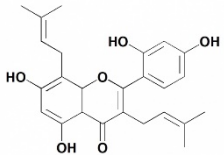
Magnoloside B	Magnoloside B
Cat# ES0010601	
Chemical Formula $C_{35}H_{46}O_{20}$	
MW 786.73	
CAS# 113557-95-2	
Natural Source Magnoliae Cortex	
Chemical Family Phenylpropanoid	EnsolBio sciences $C_{35}H_{46}O_{20}$ Mol. Wt.: 786.73

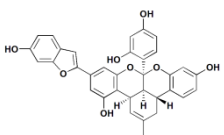
Magnoloside F	Magnoloside F
Cat# ES0010402	
Chemical Formula $C_{29}H_{36}O_{15}$	
MW 624.59	
CAS# 1418309-03-1	
Natural Source Magnoliae Cortex	
Chemical Family Phenolic	EnsolBio sciences $C_{29}H_{36}O_{15}$ Mol. Wt.: 624.59

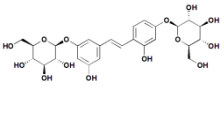
Maltol glucoside	Maltol glucoside
Cat# ES0520501	
Chemical Formula $C_{12}H_{16}O_8$	
MW 288.25	
CAS# 20847-13-6	
Natural Source Dianthi Herba	
Chemical Family Flavonoid	EnsolBio sciences $C_{12}H_{16}O_8$ Mol. Wt.: 288.25

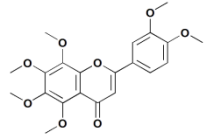
Methylnissolin	Methylnissolin
Cat# ES0050704	
Chemical Formula $C_{17}H_{16}O_5$	
MW 300.31	
CAS# 73340-41-7	
Natural Source Astragali Radix	
Chemical Family Flavonoid	EnsolBio sciences $C_{17}H_{16}O_5$ Mol. Wt.: 300.31

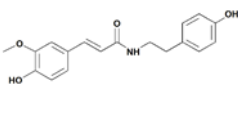
Morusin	Morusin
Cat# ES0090714	
Chemical Formula $C_{25}H_{24}O_6$	
MW 420.45	
CAS# 62596-29-6	
Natural Source Mori Cortex Radicis	
Chemical Family Flavonoid	EnsolBio sciences $C_{25}H_{24}O_6$ Mol. Wt.: 420.45

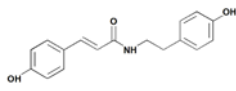
Mulberrin	Mulberrin
Cat# ES0490103	
Chemical Formula $C_{25}H_{26}O_6$	
MW 422.47	
CAS# 62949-79-5	
Natural Source Mori Ramulus	
Chemical Family Flavonoid	EnsolBio sciences $C_{25}H_{26}O_6$ Mol. Wt.: 422.47

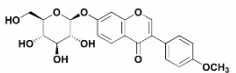
Mulberrofuran G	Mulberrofuran G
Cat# ES0090701	
Chemical Formula $C_{34}H_{26}O_8$	
MW 562.57	
CAS# 87085-00-5	
Natural Source Mori Cortex Radicis	
Chemical Family Tannin	EnsolBio sciences $C_{34}H_{26}O_8$ Mol. Wt.: 562.57

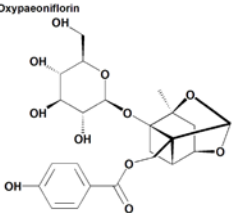
Mulberroside A	Mulberroside A
Cat# ES0090608	
Chemical Formula $C_{26}H_{32}O_{14}$	
MW 568.52	
CAS# 102841-42-9	
Natural Source Mori Cortex Radicis	
Chemical Family Flavonoid	EnsolBio sciences $C_{26}H_{32}O_{14}$ Mol. Wt.: 568.52

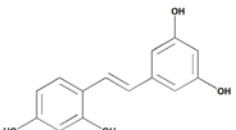
Nobiletin	Nobiletin
Cat# ES0290605	
Chemical Formula $C_{21}H_{22}O_8$	
MW 402.39	
CAS# 478-01-3	
Natural Source Citri Unshii Pericarpium	
Chemical Family Flavonoid	EnsolBio sciences $C_{21}H_{22}O_8$ Mol. Wt.: 402.39

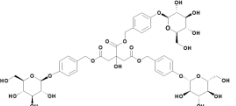
N-trans-Feruloyltyramine	N-trans-Feruloyltyramine
Cat# ES0480402	
Chemical Formula $C_{18}H_{19}NO_4$	
MW 313.35	
CAS# 66648-43-9	
Natural Source Chelidonii Herba	
Chemical Family Alkaloid	EnsolBio sciences $C_{18}H_{19}NO_4$ Mol. Wt.: 313.35

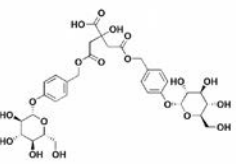
Description	Structure
N-trans-p-Coumaroyltyramine	N-P-Coumaroyltyramine
Cat# ES0480401	
Chemical Formula $C_{17}H_{17}NO_3$	
MW 283.32	
CAS# 36417-86-4	
Natural Source Chelidonii Herba	
Chemical Family Alkaloid	 <small>$C_{17}H_{17}NO_3$ Mol. Wt.: 283.32</small>

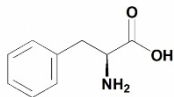
Ononin	Ononin
Cat# ES0070614	
Chemical Formula $C_{22}H_{22}O_9$	
MW 430.4	
CAS# 486-62-4	
Natural Source Puerariae Radix	
Chemical Family Flavonoid	 <small>$C_{22}H_{22}O_9$ Mol. Wt.: 430.40</small>

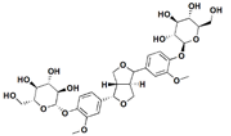
Oxypaeoniflorin	Oxypaeoniflorin
Cat# ES0190604	
Chemical Formula $C_{23}H_{28}O_{12}$	
MW 496.46	
CAS# 39011-91-1	
Natural Source Paeoniae Radix	
Chemical Family Terpenoid	 <small>$C_{23}H_{28}O_{12}$ Mol. Wt.: 496.46</small>

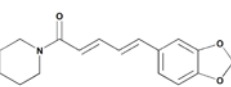
Oxyresveratrol	Oxyresveratrol
Cat# ES0490101	
Chemical Formula $C_{14}H_{12}O_4$	
MW 244.24	
CAS# 29700-22-9	
Natural Source Mori Ramulus	
Chemical Family Stilbenoid	 <small>$C_{14}H_{12}O_4$ Mol. Wt.: 244.24</small>

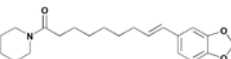
Parishin	Parishin
Cat# ES0040706	
Chemical Formula $C_{45}H_{56}O_{25}$	
MW 996.91	
CAS# 62499-28-9	
Natural Source Gastrodiae Rhizoma	
Chemical Family Phenolic	 <small>$C_{45}H_{56}O_{25}$ Mol. Wt.: 996.91</small>

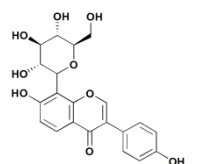
Parishin C	Parishin C
Cat# ES0040705	
Chemical Formula $C_{32}H_{40}O_{19}$	
MW 728.65	
CAS# 174972-80-6	
Natural Source Gastrodiae Rhizoma	
Chemical Family Phenolic	 <small>$C_{32}H_{40}O_{19}$ Mol. Wt.: 728.65</small>

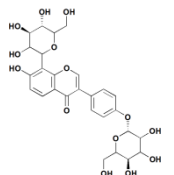
Description	Structure
L-Phenylalanine	L-Phenylalanine
Cat# ES0280601	
Chemical Formula $C_9H_{11}NO_2$	
MW 165.19	
CAS# 63-91-2	
Natural Source Dioscoreae Rhizoma	
Chemical Family Amino acid	 <small>$C_9H_{11}NO_2$ Mol. Wt.: 165.19</small>

Pinoresinol-di-O-β-D-glucoside	Pinoresinol-di-O-β-D-glucoside
Cat# ES0200603	
Chemical Formula $C_{32}H_{42}O_{16}$	
MW 682.67	
CAS# 63902-38-5	
Natural Source Eucommiae Cortex	
Chemical Family Lignan	 <small>$C_{32}H_{42}O_{16}$ Mol. Wt.: 682.67</small>

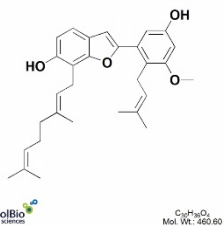
Piperine	Piperine
Cat# ES0390701	
Chemical Formula $C_{17}H_{19}NO_3$	
MW 285.34	
CAS# 94-62-2	
Natural Source Piperis Nigri Fructus	
Chemical Family Alkaloid	 <small>$C_{17}H_{19}NO_3$ Mol. Wt.: 285.34</small>

Piperolein B	Piperolein B
Cat# ES0390704	
Chemical Formula $C_{21}H_{29}NO_3$	
MW 343.46	
CAS# 30505-89-6	
Natural Source Piperis Nigri Fructus	
Chemical Family Alkaloid	 <small>$C_{21}H_{29}NO_3$ Mol. Wt.: 343.46</small>

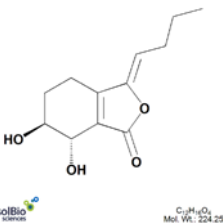
Puerarin	Puerarin
Cat# ES0070603	
Chemical Formula $C_{21}H_{20}O_9$	
MW 416.38	
CAS# 3681-99-0	
Natural Source Puerariae Radix	
Chemical Family Flavonoid	 <small>$C_{21}H_{20}O_9$ Mol. Wt.: 416.38</small>

Puerarin 4'-O-glucoside	Puerarin 4'-O-glucoside
Cat# ES0070601	
Chemical Formula $C_{27}H_{30}O_{14}$	
MW 578.52	
CAS# 117047-08-2	
Natural Source Puerariae Radix	
Chemical Family Flavonoid	 <small>$C_{27}H_{30}O_{14}$ Mol. Wt.: 578.52</small>

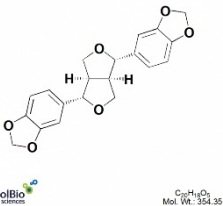
Description	Structure
Sanggenofuran A	Sanggenofuran A
Cat#	ES0090719
Chemical Formula	C ₃₀ H ₃₆ O ₄
MW	460.6
CAS#	426211-25-8
Natural Source	Mori Cortex Radicis
Chemical Family	Phenolic



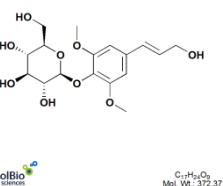
Senkyunolide I	Senkyunolide I
Cat#	ES0300701
Chemical Formula	C ₁₂ H ₁₆ O ₄
MW	224.25
CAS#	94596-28-8
Natural Source	Cnidii Rizoma
Chemical Family	Phthalide



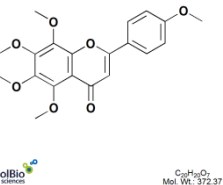
Sesamin	Sesamin
Cat#	ES0120609
Chemical Formula	C ₂₀ H ₁₈ O ₆
MW	354.35
CAS#	607-80-7
Natural Source	Acanthopanax Root Bark
Chemical Family	Lignan



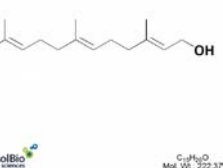
Syringin	Syringin
Cat#	ES0260604
Chemical Formula	C ₁₇ H ₂₄ O ₉
MW	372.37
CAS#	118-34-3
Natural Source	Kalopanax Cortex
Chemical Family	Phenylpropanoid



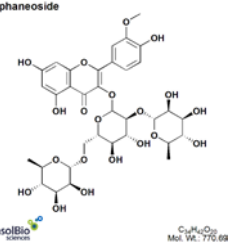
Tangeretin	Tangeretin
Cat#	ES0290607
Chemical Formula	C ₂₀ H ₂₀ O ₇
MW	372.37
CAS#	481-53-8
Natural Source	Citri Unshii Pericarpium
Chemical Family	Flavonoid



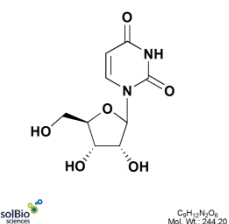
trans-Farnesol	trans-Farnesol
Cat#	ES0120705
Chemical Formula	C ₁₅ H ₂₆ O
MW	222.37
CAS#	106-28-5
Natural Source	Acanthopanax Root Bark
Chemical Family	Terpenoid



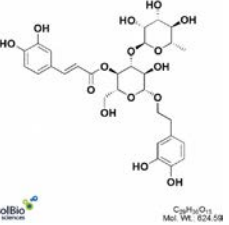
Typhaneoside	Typhaneoside
Cat#	ES0480502
Chemical Formula	C ₃₄ H ₄₂ O ₂₀
MW	770.69
CAS#	104472-68-6
Natural Source	Chelidonii Herba
Chemical Family	Terpenoid



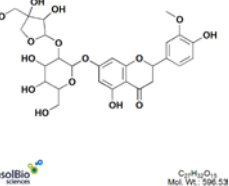
Uridine	Uridine
Cat#	ES0050603
Chemical Formula	C ₉ H ₁₂ N ₂ O ₆
MW	244.2
CAS#	58-96-8
Natural Source	Astragali Radix
Chemical Family	Nucleoside



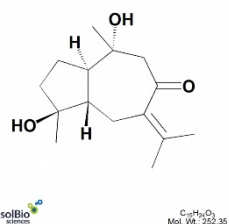
Verbascoside	Verbascoside
Cat#	ES0410602
Chemical Formula	C ₂₉ H ₃₆ O ₁₅
MW	624.59
CAS#	61276-17-3
Natural Source	Plantaginis Semen
Chemical Family	Phenolic



Viscumneoside III	Viscumneoside III
Cat#	ES0450602
Chemical Formula	C ₂₇ H ₃₂ O ₁₅
MW	596.53
CAS#	118985-27-6
Natural Source	Visci Herba
Chemical Family	Flavonoid



Zedoarondiol	Zedoarondiol
Cat#	ES0380602
Chemical Formula	C ₁₅ H ₂₄ O ₃
MW	252.35
CAS#	98644-24-7
Natural Source	Curcuma Rhizoma
Chemical Family	Terpenoid



(3R)-Tetradeca-4,6,12-trien-8,10-diyne-1,3,14-triol 8

2,3,5,4'-Tetrahydroxystilbene-2-O- β -D-glucoside 8

3,5,6,7,8,3',4'-Heptamethoxyflavone 8

3'-Methoxypuerarin 8

4'-Methoxypuerarin 8

5-Hydroxymethylfurfural 8

6-Hydroxy-7-methoxy-dihydrologustilide 8

A

Adenosine 8

Ailanthone 8

B

Batatasin I 8

C

Catechin 5-O- β -D-apiofuranoside 8

cis-Mulberroside A 8

Curcumenol 9

Curcumenone 9

D

Daidzein 8-C-apiosyl(1 \rightarrow 6) glucoside 9

Daidzin 9

Dehydrofalcariindiol 9

Dehydrotumulosic acid 9

E

Ecdysterone 9

F

Falcarindiol 9

Falcarindiol-8-acetate 9

Furanodienone 9

G

Gardenoside 9

Gastrodigenin 9

Gastrodin 10

Geniposide 10

Germacrone 10

Glycyrin 10

Glysasperin D 10

Guaiacylglycerol 10

Guanosine 10

H

Honokiol 10

I

Icariside II 10

Isoliquiritigenin-4'-O-apioglucoside 10

Isomucronulatol 10

Isomucronulatol 7-O-glucoside 10

Isovitexin 11

Ixoroside 11

K

Kurarinone 11

Kushenol O 11

Kuwanon B 11

Kuwanon C 11

Kuwanon E 11

Kuwanon U 11

L

Licorisoflavan A 11

Linoelaidic acid 11

Liquiritigenin 11

Licoricidin 11

M

Magnatriol B 11

Magnolol 12

Magnoloside A 12

Magnoloside B 12

Magnoloside F 12

Maltol glucoside 12

Methylnissolin 12

Morusin 12

Mulberrin 12

Mulberrofuran G 12

Mulberroside A 12

N

Nobiletin 12

N-trans-Feruloyltyramine 12

N-trans-p-Coumaroyltyramine 13

O

Ononin 13

Oxypaeoniflorin 13

Oxyresveratrol 13

P

Parishin 13

Parishin C 13

L-Phenylalanine 13

Pinoresinol-di-O- β -D-glucoside 13

Piperine 13

Piperolein B 13

Puerarin 13

Puerarin 4'-O-glucoside	13
S	
Sanggenofuran A	14
Senkyunolide I	14
Sesamin	14
Syringin	14
T	
Tangeretin	14
trans-Farnesol	14
Typhaneoside	14
U	
Uridine	14
V	
Verbascoside	14
Viscumneoside III	14
Z	
Zedoarondiol	14

Acanthopanax Root Bark	
Sesamin	14
trans-Farnesol	14
Achyranthis Radix	
Ecdysterone	9
Ailanthi Radicis cortex	
Ailanthone	8
Araliae Continentalis Radix	
Dehydrofalcariindiol	9
Falcariindiol	9
Falcariindiol-8-acetate	9
Astragali Radix	
Adenosine	8
Guanosine	10
Isomucronulatol	10
Isomucronulatol 7-O-glucoside	10
Methylnissolin	12
Uridine	14
Atractylodis Rhizoma Alba	
(3R)-Tetradeca-4,6,12-trien-8,10-diyne-1,3,14-triol	8
Chelidonii Herba	
N-trans-Feruloyltyramine	12
N-trans-p-Coumaroyltyramine	13
Typhaneoside	14
Citri Unshii Pericarpium	
3,5,6,7,8,3',4'-Heptamethoxyflavone	8
Nobiletin	12
Tangeretin	14
Citri Unshii Pericarpium	
6-Hydroxy-7-methoxy-dihydrologustilide	8
Senkyunolide I	14
Crataegi fructus	
Isovitexin	11
Curcumae Rhizoma	
Curcumenol	9
Curcumenone	9
Furanodienone	9
Germacrone	10
Zedoarondiol	14
Dianthi Herba	
Maltol glucoside	12
Dioscoreae Rhizoma	
Batatasin I	8
L-Phenylalanine	13

Epimedii Herba	
Icariside II	10
Eucommiae Cortex	
Guaiacylglycerol	10
Pinoresinol-di-O- β -D-glucoside	13
Gardeniae Fructus	
Gardenoside	9
Geniposide	10
Ixoroside	11
Linoelaidic acid	11
Gastrodiae Rhizoma	
Gastrodigenin	9
Gastrodin	10
Parishin	13
Parishin C	13
Glycyrrhizae Radix et Rhizoma	
Glycyrin	10
Glyasperin D	10
Isoliquiritigenin-4'-O-apioglucoside	10
Licoricidin	11
Licorisoflavan A	11
Liquiritigenin	11
Kalopanax Cortex	
Syringin	14
Magnoliae Cortex	
Honokiol	10
Magnatriol B	11
Magnolol	12
Magnoloside A	12
Magnoloside B	12
Magnoloside F	12
Mori Cortex Radicis	
cis-Mulberroside A	8
Kuwanon E	11
Kuwanon U	11
Morusin	12
Mulberrin	12
Mulberrofuran G	12
Mulberroside A	12
Sanggenofuran A	14
Mori Ramulus	
Kuwanon B	11
Kuwanon C	11
Oxyresveratrol	13

Paeoniae Radix	
Oxypaeoniflorin	13
Piperis Nigri Fructus	
Piperine	13
Piperolein B	13
Plantaginis Semen	
Verbascoside	14
Polygoni Multiflori Radix	
2,3,5,4'-Tetrahydroxystilbene-2-O-β-D-glucoside	8
Poria Sclerotium	
Dehydrotumulosic acid	9
Puerariae Radix	
3'-Methoxypuerarin	8
4'-Methoxypuerarin	8
Daidzein 8-C-apiosyl(1→6) glucoside	9
Daidzin	9
Ononin	13
Puerarin	13
Puerarin 4'-O-glucoside	13
Rehmanniae Radix Preparata	
5-Hydroxymethylfurfural	8
Sophorae Radix	
Kurarinone	11
Kushenol O	11
Ulmi Cortex	
Catechin 5-O-β-D-apiofuranoside	8
Visci Herba	
Viscumneoside III	14

Alkaloids	
N-trans-Feruloyltyramine	12
Piperine	13
Piperolein B	13
Fatty acids	
Linoelaidic acid	11
Flavonoids	
3,5,6,7,8,3',4'-Heptamethoxyflavone	8
3'-Methoxypuerarin	8
4'-Methoxypuerarin	8
Catechin 5-O-β-D-apiofuranoside	8
Daidzein 8-C-apiosyl(1→6) glucoside	9
Daidzin	9
Glycyrin	10
Glysasperin D	10
Icariside II	10
Isomucronulatol	10
Isomucronulatol 7-O-glucoside	10
Isovitexin	11
Kurarinone	11
Kushenol O	11
Kuwanon B	11
Kuwanon C	11
Kuwanon E	11
Kuwanon U	11
Licoricidin	11
Licorisoflavan A	11
Liquiritigenin	11
Maltol glucoside	12
Methylnissolin	12
Morusin	12
Mulberroside A	12
Nobiletin	12
Ononin	13
Puerarin	13
Puerarin 4'-O-glucoside	13
Tangeretin	14
Typhaneoside	14
Viscumneoside III	14
Iridoids	
Geniposide	10
Ixoroside	11
Lignans	
Honokiol	10

Magnatriol B	11
Magnolol	12
Pinoresinol-di-O-β-D-glucoside	13
Sesamin	14
Nucleosides	
Adenosine	8
Guanosine	10
Uridine	14
Phenolics	
Batatasin I	8
Gastrodigenin	9
Gastrodin	10
Guaiacylglycerol	10
Isoliquiritigenin-4'-O-apioglucoside	10
Magnoloside F	12
N-trans-p-Coumaroyltyramine	13
Parishin	13
Parishin C	13
Sanggenofuran A	14
Verbascoside	14
Phenylpropanoids	
Magnoloside A	12
Magnoloside B	12
Syringin	14
Phthalides	
6-Hydroxy-7-methoxy-dihydrogustilide	8
Senkyunolide I	14
Polyacetylenes	
(3R)-Tetradeca-4,6,12-trien-8,10-diyne-1,3,14-triol	8
Dehydrofalcariindiol	9
Falcariindiol	9
Falcariindiol-8-acetate	9
Steroids	
Ecdysterone	9
Stilbenes	
2,3,5,4'-Tetrahydroxystilbene-2-O-β-D-glucoside	8
cis-Mulberroside A	8
Oxyresveratrol	13
Tannins	
Mulberrin	12
Mulberrofuran G	12
Terpenoids	
Ailanthone	8
Curcumenol	9

Curcumenone	9
Dehydrotumulosic acid	9
Furanodienone	9
Gardenoside	9
Germacrone	10
Oxypaeoniflorin	13
trans-Farnesol	14
Zedoarondiol	14
Others	
5-Hydroxymethylfurfural	8
L-Phenylalanine	13

Chemical structure of a complex polycyclic molecule, likely a steroid derivative, featuring multiple hydroxyl groups and a ketone. The structure is overlaid with a green grid pattern.